

DWM DLLF-301-EWL

Specifications

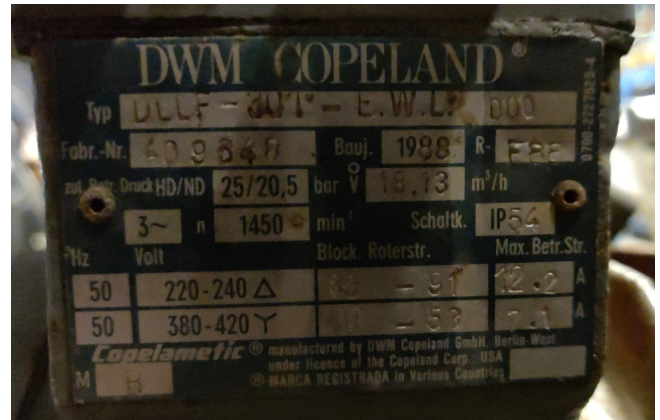
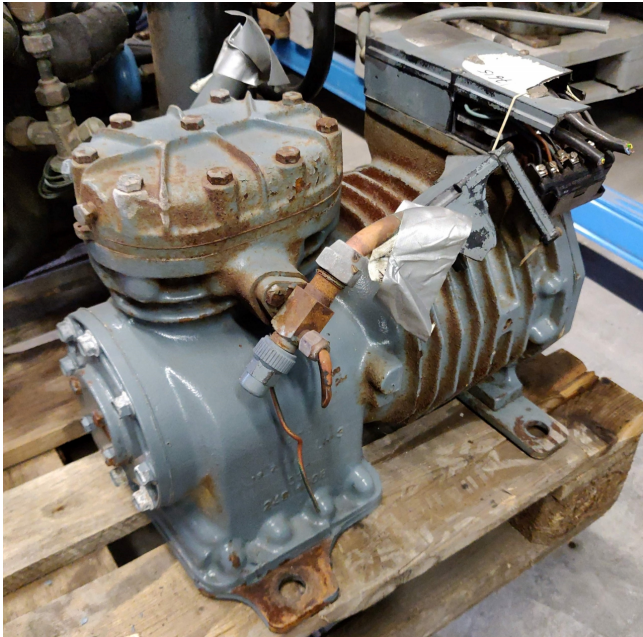
Brand	DWM
Type	DLLF-301-EWL
Refrigerant	Freon
kW at -20°C/+40°C	5.98
kW at -30°C/+40°C	3.22
kW at -40°C/+40°C	1.34
m3 / h	18.2
Remarks	R22 or other freon types
Weight in kg.	91
Stock	1



Description

Used DWM DLLF-301-EWL

Used semi-hermetic reciprocating compressor DWM - Copeland DDLLF-301-EWL. Our capacity table is based on the used type of Freon. You can also use this compressor(s) on alternative types of Freon. For all the other specs (if available), see the picture of the manufacturer model plate or the attached pdf file. *Why choose for HOSBV? We're not only the largest used refrigeration specialist in Europe, but also, we deliver all equipment including an extensive test, warranty and industrial cleaning. *Optional we can also perform a new paint job and arrange the logistics.



Model: DLL-301
Capacity

R22

Cooling capacity [kW]

$t_c \setminus t_e$	-50	-45	-40	-35	-30	-25	-20	-15	-10	-5
25	0.74	1.37	2.18	3.19	4.43	5.90	7.63	9.63	11.93	14.54
30	0.55	1.13	1.89	2.84	4.01	5.42	7.07	8.99	11.19	13.70
35	-	0.90	1.61	2.51	3.61	4.94	6.52	8.35	10.47	12.87
40	-	-	1.34	2.18	3.22	4.48	5.98	7.73	-	-
45	-	-	-	1.87	2.85	4.04	5.45	-	-	-
50	-	-	-	-	2.49	3.60	-	-	-	-
55	-	-	-	-	2.14	3.19	-	-	-	-

Power input [kW]

$t_c \setminus t_e$	-50	-45	-40	-35	-30	-25	-20	-15	-10	-5
25	1.20	1.42	1.67	1.92	2.17	2.42	2.64	2.84	3.01	3.12
30	1.18	1.42	1.68	1.96	2.24	2.52	2.80	3.05	3.26	3.44
35	-	1.41	1.69	1.99	2.30	2.62	2.94	3.23	3.51	3.75
40	-	-	1.68	2.01	2.35	2.71	3.07	3.41	-	-
45	-	-	-	2.02	2.40	2.79	3.18	-	-	-
50	-	-	-	-	2.43	2.86	-	-	-	-
55	-	-	-	-	2.46	2.91	-	-	-	-